

## Symbols and terms

**Green light**  
indicates that the monitoring is functioning in the correct way



**Red light** and a continuous two-toned alarm signal indicate that blood has dripped onto the sensor either because the needle has been pulled out or there has been a leakage.

**Yellow light**  
at the battery warning symbol indicates that the battery needs to be recharged

**Yellow light** at the exclamation mark indicates one of the following: Moisture has come into contact with the sensor. The sensor has come loose or broken down.

## Your contact person at the hospital:

Name: \_\_\_\_\_

Phone: \_\_\_\_\_



Redsense Medical AB  
Rörkullsvägen 4  
SE-302 41 Halmstad, Sweden  
Tel: +46 35 10 60 30  
Fax: +46 35 10 60 37  
info@redsensemical.com  
www.redsensemical.com

RM-1-RM125 - MAY 2010



## Redsense – detection of blood loss



## How it works

Redsense consists of two parts; an alarm unit and a sensor patch. The sensor patch employs fibre optic technology embedded in the patch which you connect to the alarm unit. The alarm unit sends infrared light through the fibre enabling continuous monitoring of the venous needle. If bleeding occurs and blood comes in contact with the sensor patch the alarm unit is designed to sound the alarm.

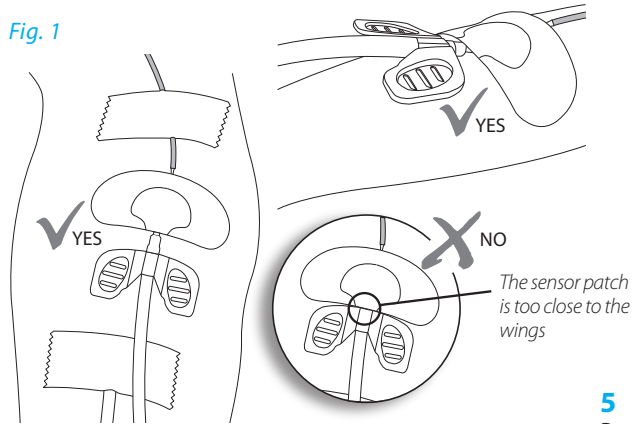
# How to connect Redsense, steps to follow;

1

First apply the sensor patch with the absorbent part centred over the venous needle puncture site. Do not cover the wings of the needle with the sensor patch. Secondly secure your needle as instructed by your training nurse.

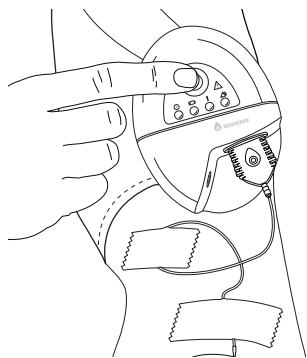
See **fig. 1** for correct positioning of the sensor patch.

**Fig. 1**



4

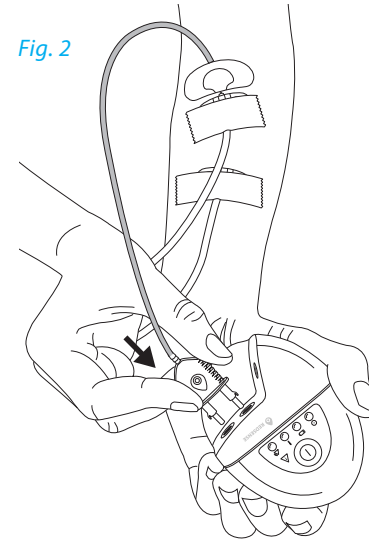
Press the start button to start the monitoring. The green light indicates functional monitoring.



2

Connect the sensor patch to the alarm unit.

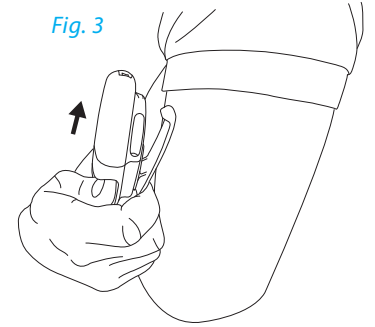
**Fig. 2**



3

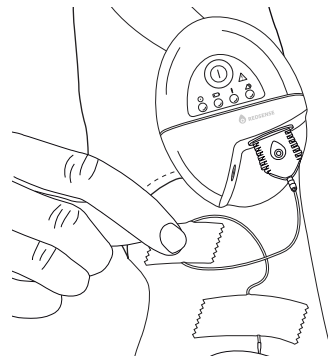
Fasten the alarm unit.

**Fig. 3**



5

Practical Tips:  
You may secure the fibre in a loop, using tape.



Redsense is a system for monitoring the venous needle during hemodialysis. In the event where blood comes in contact with the sensor the device will sound the alarm to alert you of the situation so you can take appropriate actions. These steps are set out in your instructions for home hemodialysis, provided by your training center.